



# Morecambe Offshore Windfarm: Generation Assets Plans

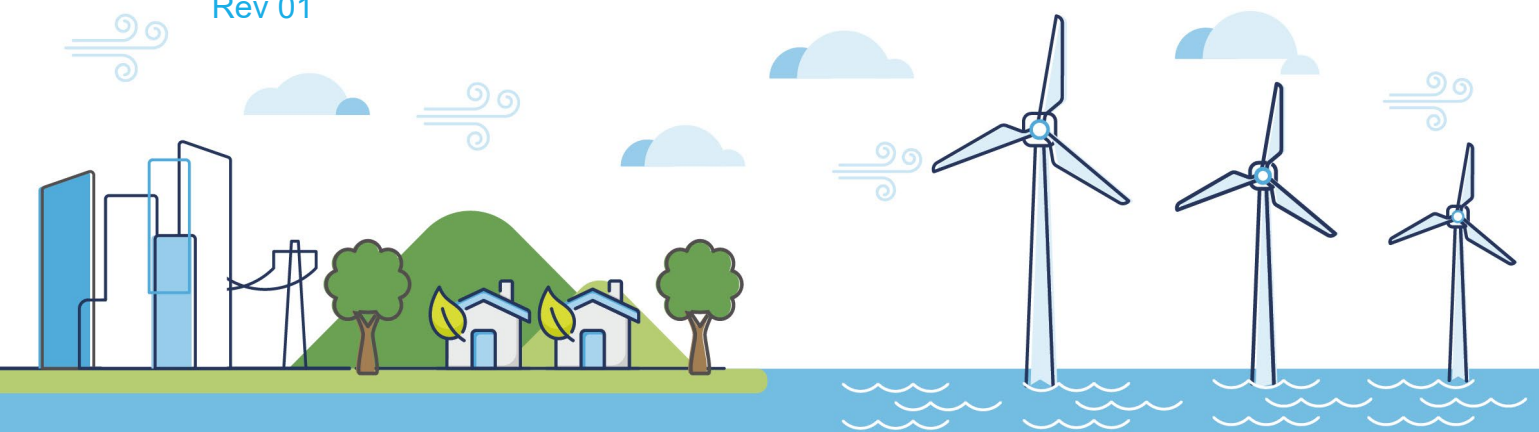
## Volume 2

### Offshore Statutory and Non-Statutory Nature Conservation Sites

PINS Document Reference: 2.6

APFP Regulation: 5(2)(I)

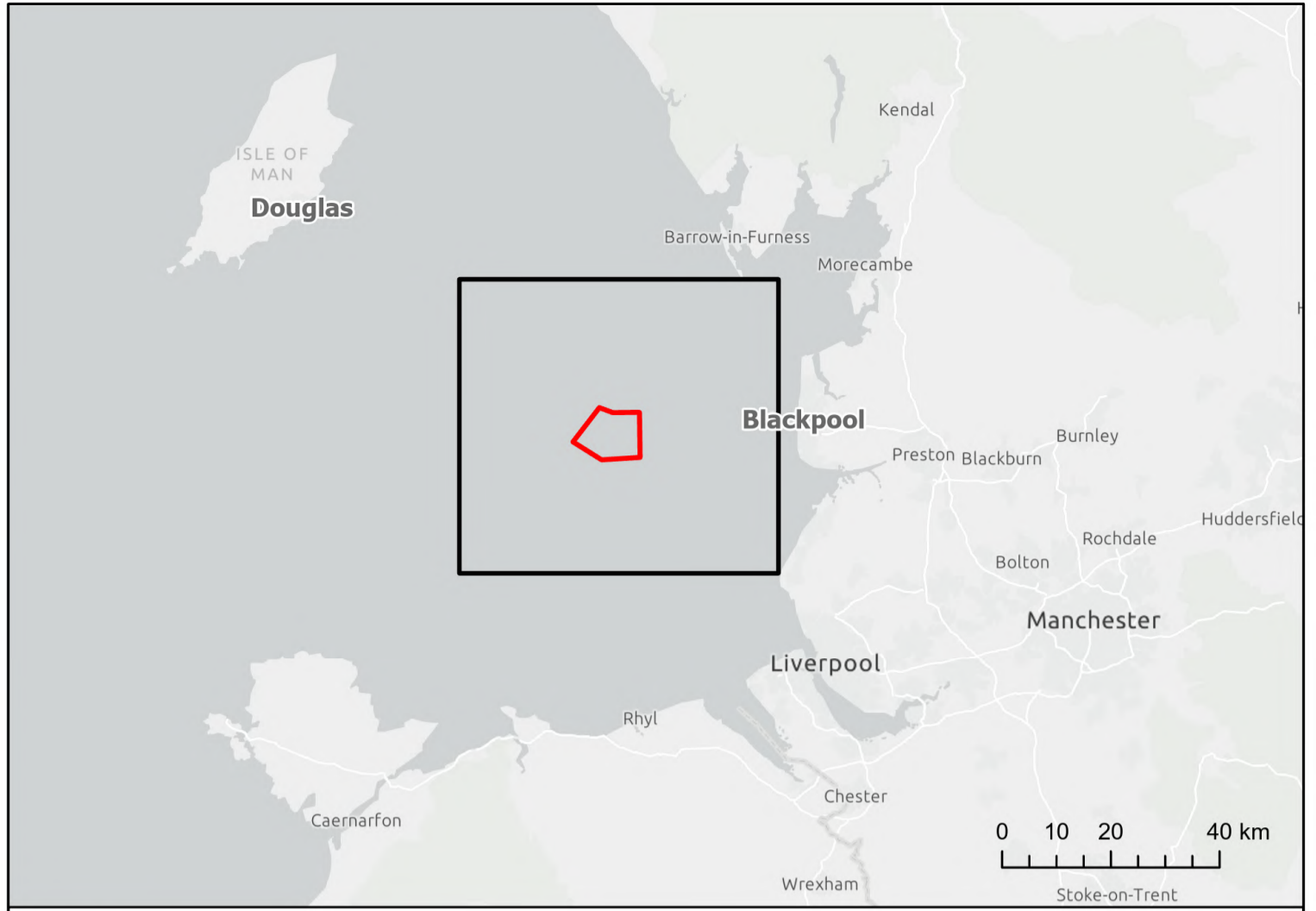
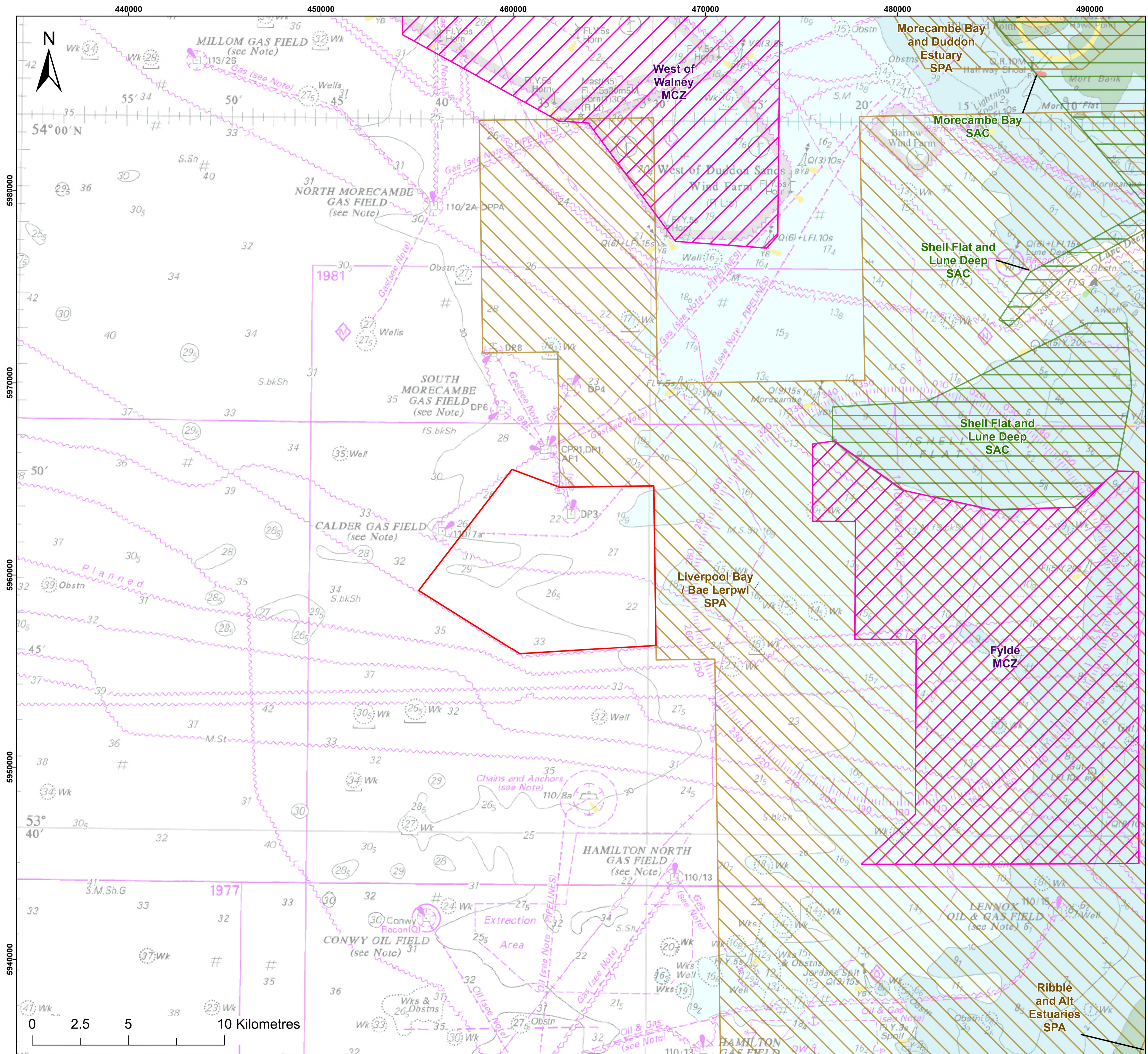
Rev 01



## Document History

<b>Doc No</b>	MOR001-FLO-CON-ENV-PLN-0021	<b>Rev</b>	01
<b>Alt Doc No</b>	PC1165-RHD-ES-XX-PN-Z-0006		
<b>Document Status</b>	Approved for Use	<b>Doc Date</b>	May 2024
<b>PINS Doc Ref</b>	2.6	<b>APFP Ref</b>	5(2)(l)

<b>Rev</b>	<b>Date</b>	<b>Doc Status</b>	<b>Originator</b>	<b>Reviewer</b>	<b>Approver</b>	<b>Modifications</b>
01	May 2024	Approved for Use	Royal HaskoningDHV	Morecambe Offshore Windfarm Ltd	Morecambe Offshore Windfarm Ltd	n/a



**Legend:**

- Order Limits
- Special Area of Conservation (SAC)
- Special Protection Area (SPA)
- Marine Conservation Zone (MCZ)

Main map scale is 1:100,000 when printed at A1 (native page size)  
Inset and key maps will vary.

© Haskoning DHV UK Ltd, 2024; © JNCC, 2024; © Natural England, 2024; © Contains OS data © Crown copyright and database right, 2024; © British Crown and Oceanwise, 2024. All rights reserved. License No. EMS-EK001-801211. Not to be used for Navigation. Esri UK, Esri, TomTom, Garmin, FAO, NOAA, USGS

**Project:**  
Morecambe Offshore Windfarm: Generation Assets  
Development Consent Order Plans

**Title:**  
Offshore Statutory and Non-Statutory  
Nature Conservation Sites

APFP Ref:	Doc Ref: 2.6				
	5(2)(l) Drawing No: PC1165-RHD-DC-OF-DG-Z-0089				
Revision:	Date:	Drawn:	Checked:	Size:	Scale:
P03	16/04/2024	SB	GC	A1	1:100,000
P04	01/05/2024	SB	GC	A1	1:100,000

Co-ordinate system: WGS 1984 UTM Zone 30N

